



# Hi-Res Thermography Camera

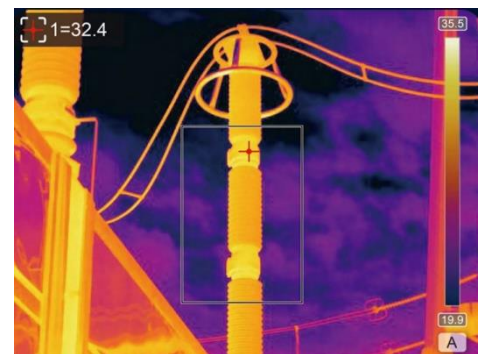
## TI100

### TI100 Thermography Camera

The **TI100** thermography camera is the latest expert-level thermal imaging camera. The T100 comes with a high 1024 × 768 pixels a-Si microthermal detector, a manual and auto integrated lens, 120° rotation, excellent imaging quality, to meet the strictest requirements of scientific research companies and institutions for high-end thermography.

#### Features:

- Accurate 1024x768 uncooled a-Si detector
- Manual & auto integrated lens
- Continuous autofocus feature
- Automatic lens recognition
- 120° lens rotation
- DSX Visible light and infrared image fusion and overlay
- Multiple measure modes: auto tracking high and low temperature, line temperature measurement, isotherms, area temperature measurement, etc.
- 5" Touch screen, HD viewfinder, clearly visible in bright sunlight
- Bluetooth, WIFI image and data transmission



#### Specifications:

Detector	Uncooled a-Si detector
Detector resolution	1024 x 768 pixels
Pixel pitch	17μm
Spectral range	7.5 - 14μm (LWIR)
Field of View (FOV)	28° × 21°
IFOV	0.48mrad
Focus	Auto / Motor / Manual
Frame rate	50Hz
LCD display	5",color tpuch screen LCD, 1280 x 720 pixels
Viewfinder	0.5 color OLED display, support manual zoom, 1024x768
Visual camera	5 megapixel CMOS, autofocus, LED fill light
Magnification	1X~10X continuous



# Hi-Res Thermography Camera

## TI100

### Specifications (cont'd):

Color palette	12 color palettes
Thermal sensitivity (NETD)	30mK
Contrast and brightness (level and gain)	Auto / Manual
Temperature range	-20°C ~ +600°C, optional"1200°C
Measurement accuracy	±2°C / ±2% from reading
Emissivity correction	Adjustable from 0.1 to 1.0 or selectable materials table
Memory card	64GB
Image storage	Auto/manual single frame image or dynamic recording
Single IR image storage	JPEG, with 14-bit measured data image
Voice annotation	60s voice recording per stored image
Laser pointer classification	Class 2
Laser power	1mW, wavelength 635nm red
Power interface	Yes
Video output	HDMI
Communication interface	WIFI, Bluetooth, USB2.0
Audio output	Yes
SD card slot	Yes
Battery type	Lithium Ion battery, rechargeable
Operating time	4 hours continuous (room temperature)
External power	DC: 10 - 15V
Charging type	Two-seater charger or in camera
Power saving	Yes
Operating temperature range	-20°C ~ +50°C
Storage temperature range	-40°C ~ +70°C
Humidity	≤ 95% RH (non condensing
EMC	EN61000-6-4 & EN61000-6-2, FCC47CFR Part 15 Class A, EN61000-4-8 L5
Operating temperature	-20°C~+60°C
Storage temperature	-40°C~+70°C
Vibration	2G (IEC60068-2-6)
Shock	25G (IEC60068-2-29)
Enclosure	IP54 (IEC60529)
Physical data:    Dimensions	186mm (L) x 106mm (W) x 141mm (H)
Weight	≤ 1.7kg (with standard lens & battery)
TI100 system consists of:	Thermal imaging camera, Thermal imaging camera, 2 Lithium Ion batteries, battery charger, adapter, USB cable, SD card, video cable, card reader, USB flash drive, warranty card, certificate, calibration certificate, user manual, carrying case



# Hi-Res Thermography Camera **TI100**

